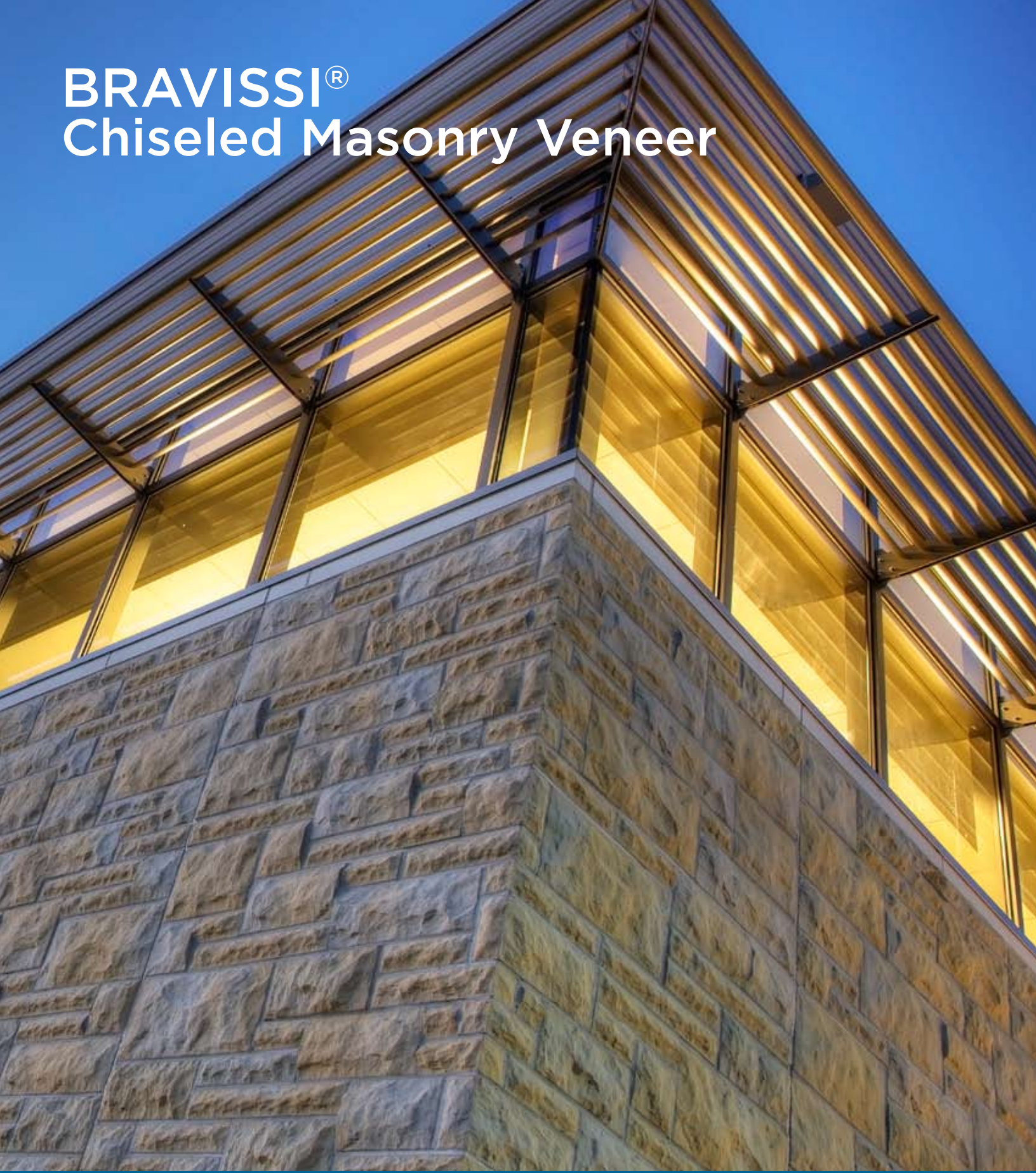


# BRAVISSI® Chiseled Masonry Veneer



**ANCHOR™**  
BUILD SOMETHING BEAUTIFUL





Color: Endion Red



*Stunning*

Color: Limestone

Color: Stearns County Blend

**Bravissi® Chiseled Masonry Veneer**

Modeled after classic, hand-chiseled masonry, this highly realistic stone-look veneer is the ideal choice for your most distinctive structures. Ideal for both interior and exterior applications and designed in modular sizes for broad pattern flexibility.



Color: Limestone



Color: Kasota Pink



*Versatile*



**FEATURES**

- Create a beautiful, lasting impression.
- Applicable to a variety of structures and designs.
- Ideal for interior and exterior applications.
- Designed in standard sizes for infinite pattern flexibility.

**COORDINATING LANDSCAPE PRODUCTS**

Complement your structure with coordinating landscape retaining walls, such as an Artisana® Retaining Wall, or a variety of Anchor™ pavers.

Visit [anchorblock.com](http://anchorblock.com) to view all our product lines.



## COLOR SELECTION

Popular color offering shown below. Custom colors are available and can be made to specifications. Additional charges will apply. Contact your Anchor Block Company sales representative for more information.

Due to the nature of concrete and the molding process, as well as the printing process, colors may vary slightly. We recommend viewing actual samples as you make your selections.



Brownstone



Kasota Pink



Kasota



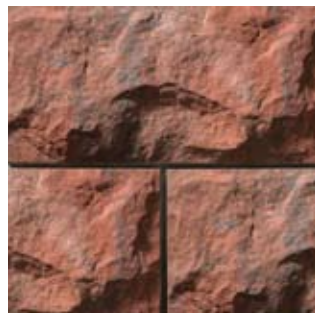
Limestone



Millstone Gold



Tennessee



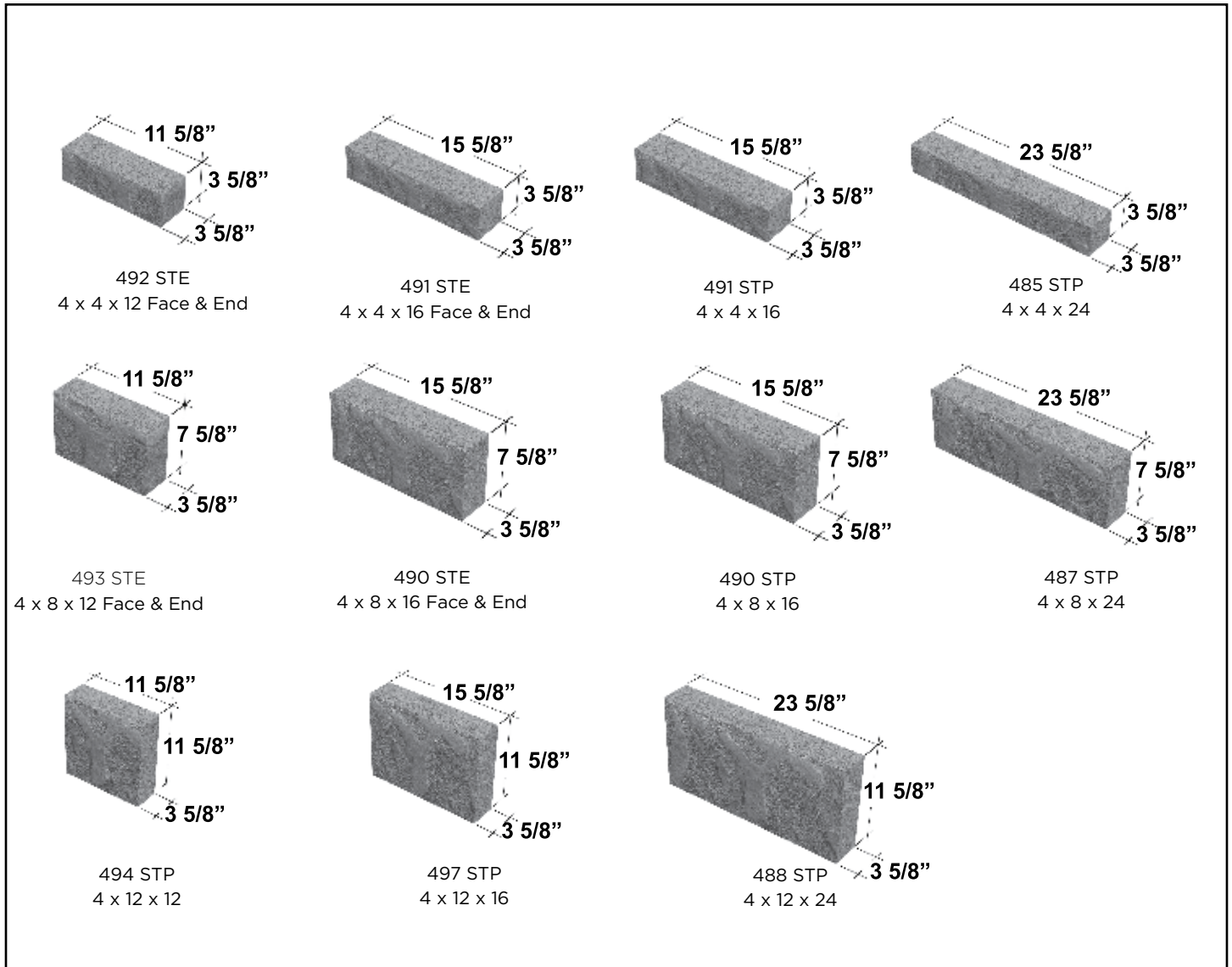
Endion Red



Winter White

## SHAPES AND SIZES

Available in a range of shapes and sizes—for unlimited design and pattern options. Each size is shipped on a separate pallet.



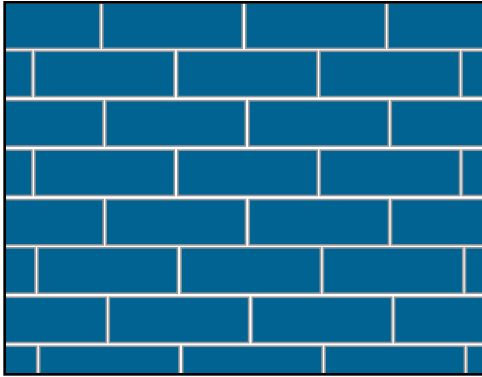
### Traditional stone look. Real value.

Each piece has unique texture that provides a distinct look and unique texture - just like real stone.

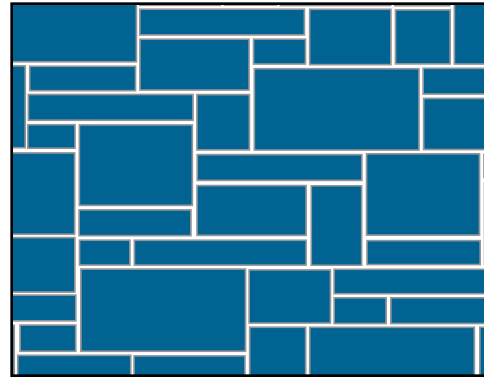


**Bold, Deep Shadows**  
12" x 24" unit

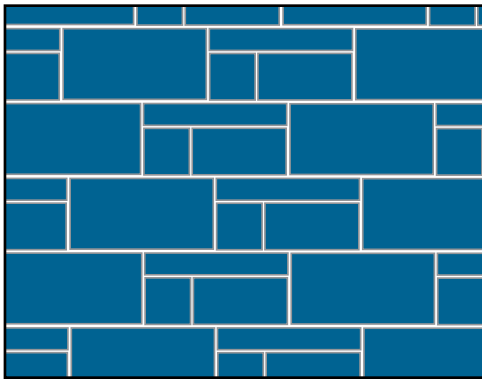
PATTERNS



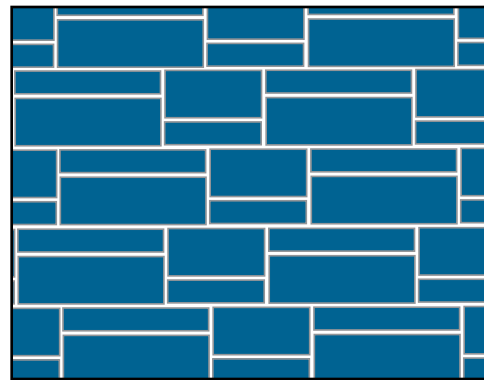
Pattern A  
Unit Sizes: 8" X 24"



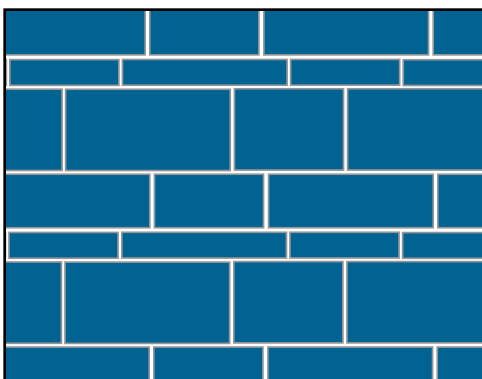
Pattern B—Random Ashlar  
Unit Sizes: 4" X 8"\*, 4" X 16", 4" X 24", 8" X 8"\*,  
8" X 16", 8" X 24", 12" X 8"\*, 12" X 16", 12" X 24"



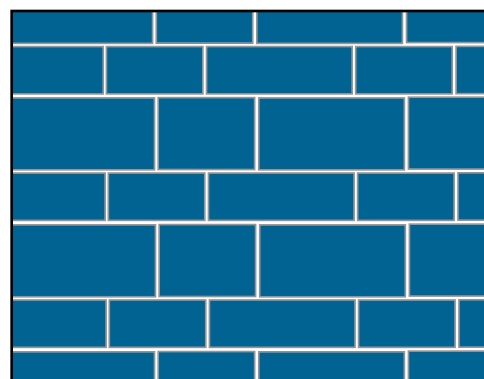
Pattern C  
Unit Sizes: 4" X 24", 8" X 8"\*, 8" X 16",  
12" X 24"



Pattern D  
Unit Sizes: 4" X 16", 4" X 24", 8" X 16",  
8" X 24"



Pattern E  
Unit Sizes: Contains all sizes\*.



Pattern F  
Unit Sizes: 8" X 16", 8" X 24", 12" X 16",  
16" X 24"

\*Standard block sizes have been cut to fit pattern.

## Part 1: General

### Submittal

Submit color sample(s) of each color specified from manufacturer(s) series. Submit product literature, certification, test reports, full size sample(s) of each color specified or selected.

### Quality Assurance

Bravissi™ Sculpted Masonry Veneer shall conform to all provisions of ASTM C-90.

**Field Constructed Mock-ups:** Construct a separate sample panel not less than 4' X 4' of units of each color and size to be used in the project. The cleaning agent and method should also be determined at the time the sample panel is constructed. Walls built without approved field mock-ups constitute acceptance.

### Delivery, Storage and Handling

Bravissi™ Sculpted Masonry Veneer shall be delivered to the job site on wood pallets.

Each cube shall be covered with a clear plastic wrap and protective material between layers. Pallets shall be stored in single-stacks on level ground and covered with water-proof covering (e.g. tarpaulins) to protect the units from inclement weather. Units must be handled carefully to avoid breakage and damage to the finished surfaces.

### Project/Site Conditions and Handling

Cover walls each day after installation to keep open walls protected and dry.

## Part 2: Products

### Product Name

Bravissi™ Sculpted Masonry Veneer

### Manufacturer

Anchor Block Company  
13450 Johnson Memorial Drive  
Shakopee, MN  
Ph: 952-351-9700  
Fax: 952-351-9702  
www.anchorblock.com

### Water Repellency

All Bravissi™ Sculpted Masonry Veneer shall be manufactured with Integral water repellent admixtures.

## Part 3: Execution

### Laying Masonry Walls

Lay units using the best concrete masonry practices. Install only quality units, reject all defective units. Align unit's level, plumb, and true with uniform, carefully- tooled 3/8" wide joints on the finished side of the wall (No raked mortar joints). Draw blocks from two or more pallets at a time during installation. Use a water repellent mortar additive, following manufacturer's instructions, for all exterior walls. Type S or Type N mortar is recommended.

### Installation

**Lighting:** Provide adequate lighting for masonry installation by placing all lighting a reasonable distance from the wall for even illumination. Do not use trough lighting.

**Cutting:** Make all unit cuts, including those for bonding, holes, boxes, etc., with masonry saws, using either an abrasive or diamond blade. Cut neatly and locate for best appearance.

**Joints:** All mortar joints shall be tooled concave joints.

### Inspection

The facing shall be free from chips, cracks, or any other imperfection that would detract from the overall appearance of the finished wall when viewed from a distance of twenty (20) feet at right angles to the wall with diffused lighting.

### Flashing of Masonry Work

Install flashing at locations shown in the plans and in strict accordance with the details and the best masonry flashing practices.

### Weep Holes and Vents

Install weep holes and vents at proper intervals (32" O.C. and 2" long, above bed joints, typical) at courses above grade above flashing, and at any water stops over windows, doors, and beams.

### Cleaning

Keep walls clean daily during installation using brushes, rags or burlap. Do not allow excess mortar lumps or smears to harden on the finished surfaces. Remove green mortar with burlap or dry cloth. Harsh cleaning methods after walls have been erected might mar the surface appearance of the units.

### Final Cleandown

No ACID or ACID based solutions shall be used in the cleaning of Bravissi™ Sculpted Masonry Veneer. Clean walls in accordance with Minnesota Concrete Masonry Association's recommended practices for cleaning architectural concrete masonry. High pressure washing is not recommended.

### Maintenance

Bravissi™ Sculpted Masonry Veneer, properly installed and cleaned, need virtually no maintenance other than routine cleaning with standard commercial grade cleaning agents. Graffiti, paint or dye stains may need special cleaning methods and products. Contact manufacturer for specific cleaning recommendations. Field application of a water repellent sealer is recommended on exterior walls.

Updates to specification may apply. Check with your sales representative.



©2010 Anchor Block Company. Anchor Block Company manufactures the masonry products described in this brochure and these products are covered by Anchor Block Company's Limited Warranty. For a complete copy, visit your local distributor or contact Anchor Block Company at [www.anchorblock.com](http://www.anchorblock.com). All sales are subject to Anchor's Terms and Conditions of Sale and Limited Warranty which can be found at [www.anchorblock.com](http://www.anchorblock.com) or by contacting us at 1-800-440-8657.